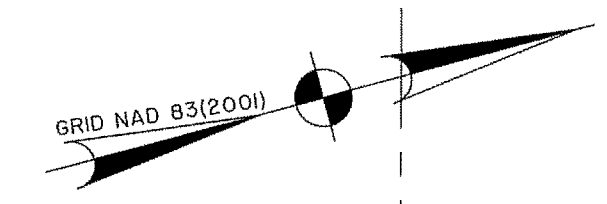


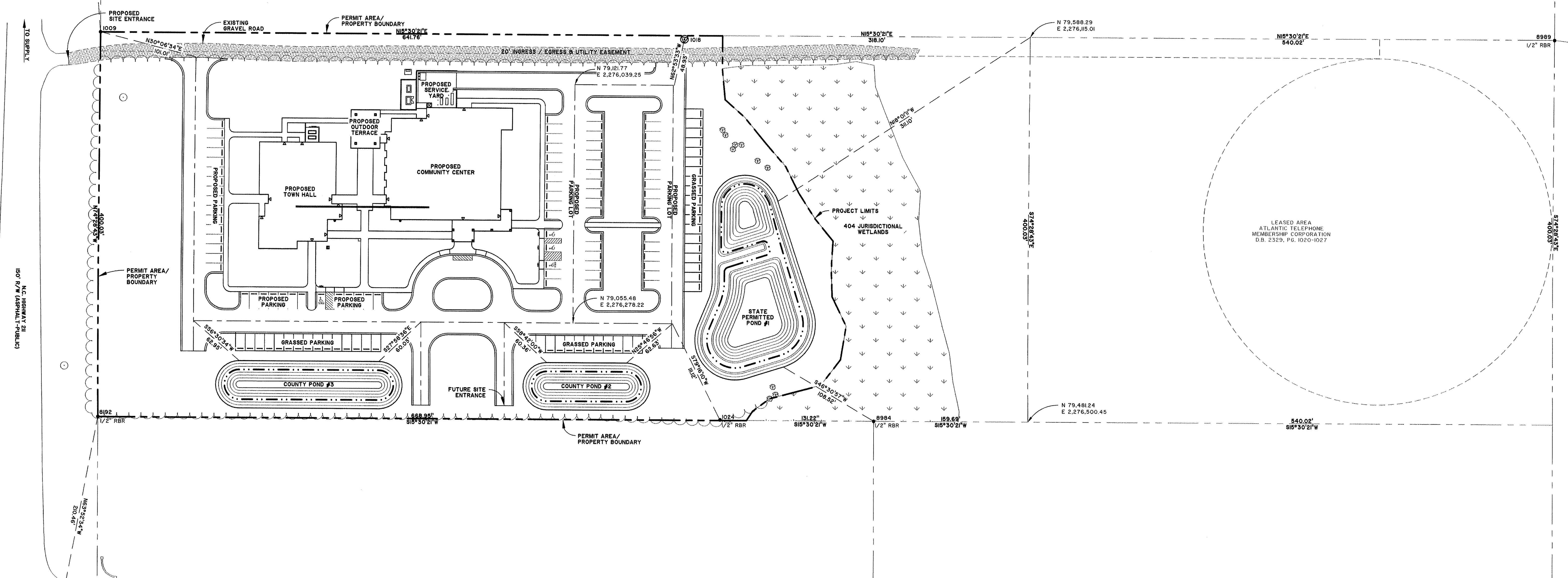
North Carolina
One Call Center
Call Before You Dig
"It's The Law"
1-800-632-4949



NOTES
 1. HORIZONTAL AND VERTICAL CONTROL SHOWN ON THIS SHEET IS TO BE USED FOR ALL LAYOUT AND RECORD DATA FOR THIS PROJECT. IF DISCREPANCIES ARE FOUND CONTACT THOMAS & HUTTON ENGINEERING CO. BEFORE PROCEEDING. IT IS THE CONTRACTOR'S RESPONSIBILITY TO ESTABLISH SUPPLEMENTAL CONTROL WITHIN THE PROJECT AS NEEDED.
 2. ELEVATIONS FOR THIS PROJECT AND SHOWN ON THIS DRAWING ARE BASED ON THE NAVD 88 DATUM.
 3. COORDINATES FOR THIS PROJECT AND SHOWN ON THIS DRAWING ARE BASED ON THE NORTH CAROLINA STATE PLANE COORDINATE SYSTEM, SINGLE ZONE, NAD83(2000), U.S. SURVEY FEET.
 4. COORDINATES SHOWN ON THIS DRAWING ARE GROUND COORDINATES.
 5. THE AVERAGE COMBINED SCALE FACTOR USED FOR THIS PROJECT IS 1.0002644.
 6. LINE AND CURVE TABLES ARE SHOWN ON SHEET C3.1

LEGEND
 ◉ BENCHMARK (VERTICAL ONLY)
 △ HORIZONTAL CONTROL POINT
 ⊗ COMBINED-HORIZONTAL AND VERTICAL CONTROL

HARBOR DEVELOPMENT CORPORATION, ET AL
 TRACT 21
 MOREHEAD FARMS, INC.
 29405029
 D.B. 176, PG. 012
 M.C. U. PG. 0



HORIZONTAL AND VERTICAL CONTROL TABLE

POINT	NORTHING	EASTING	ELEVATION	DESCRIPTION
1008	78797.44	2275172.86	47.13	REBAR AND CAP
1009	78863.37	2275658.41	45.00	"
1010	78463.65	2276432.81	46.17	PK NAIL
1018	79242.53	2278023.00	44.06	REBAR AND CAP
1019	78967.77	2278429.52	43.33	CMP. SYSTEM 1975
1024	79174.64	2276414.71	44.02	"
8192	78856.32	2276243.65		"
8984	79327.27	2278457.73	41.58	"
8989	80108.80	2278250.38		"
8441	79371.10	2276355.86		NAIL FOUND

CANAL ASSOCIATES, LLC
 TRACT 11 B
 MOREHEAD FARMS, INC.
 29406029
 D.B. 217, PG. 049

CANAL ASSOCIATES, LLC
 TRACT 11 B
 MOREHEAD FARMS, INC.
 29406029
 D.B. 217, PG. 049

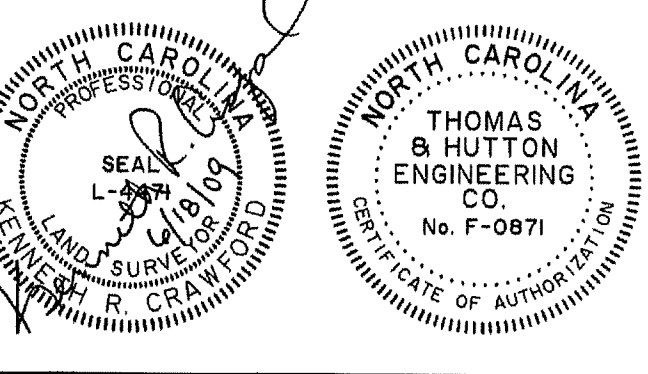
John Sawyer Architects

P.O. Box 176
 124 Market Street
 Wilmington, NC 28402
 p: 910.762.0892
 f: 910.762.2197
 e: jsarchit@bellsouth.net

THOMAS & HUTTON ENGINEERING CO.
 219 STATION ROAD
 SUITE 101
 WILMINGTON, NC 28405
 PHONE: (910) 332-3380
 FAX: (910) 332-3381
 WWW.THOMAS-HUTTON.COM
 GEORGIA • SAVANNAH • BRUNSWICK
 SOUTH CAROLINA • CHARLESTON • MYRTLE BEACH
 NORTH CAROLINA • WILMINGTON

Christopher A. Holmes, P.E., Consulting Engineer, Inc.
 Phone 910-795-6688 • Fax 910-795-5889
 Oneida 0844725 Oneida Drive • Suite F-4 • Wilmington, NC 28403

S&S designs
 Engineering • Drafting • Design
 5725 Oleander Drive Suite G-1
 Wilmington, NC 28403
 (910) 791-2776
 (FAX) (910) 791-2710

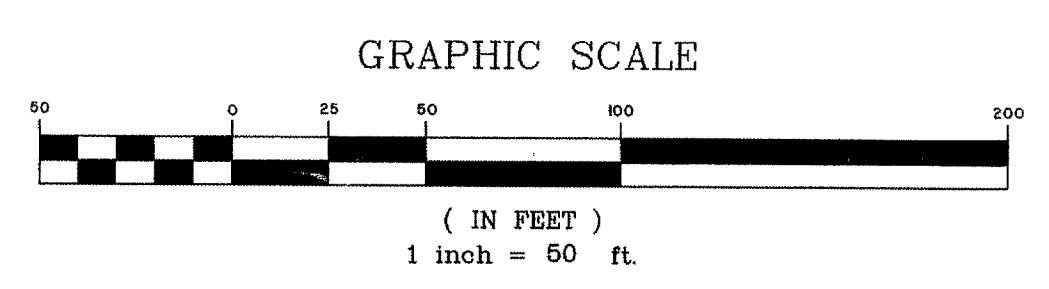


Town of St. James
 Town Hall and
 Community Center

CONSTRUCTION DRAWINGS
 JUNE 18, 2009

Revisions:

Survey Control Plan
C1.2
 2 Of
 17 Sheets



© 2009 John Sawyer Architects All Rights Reserved